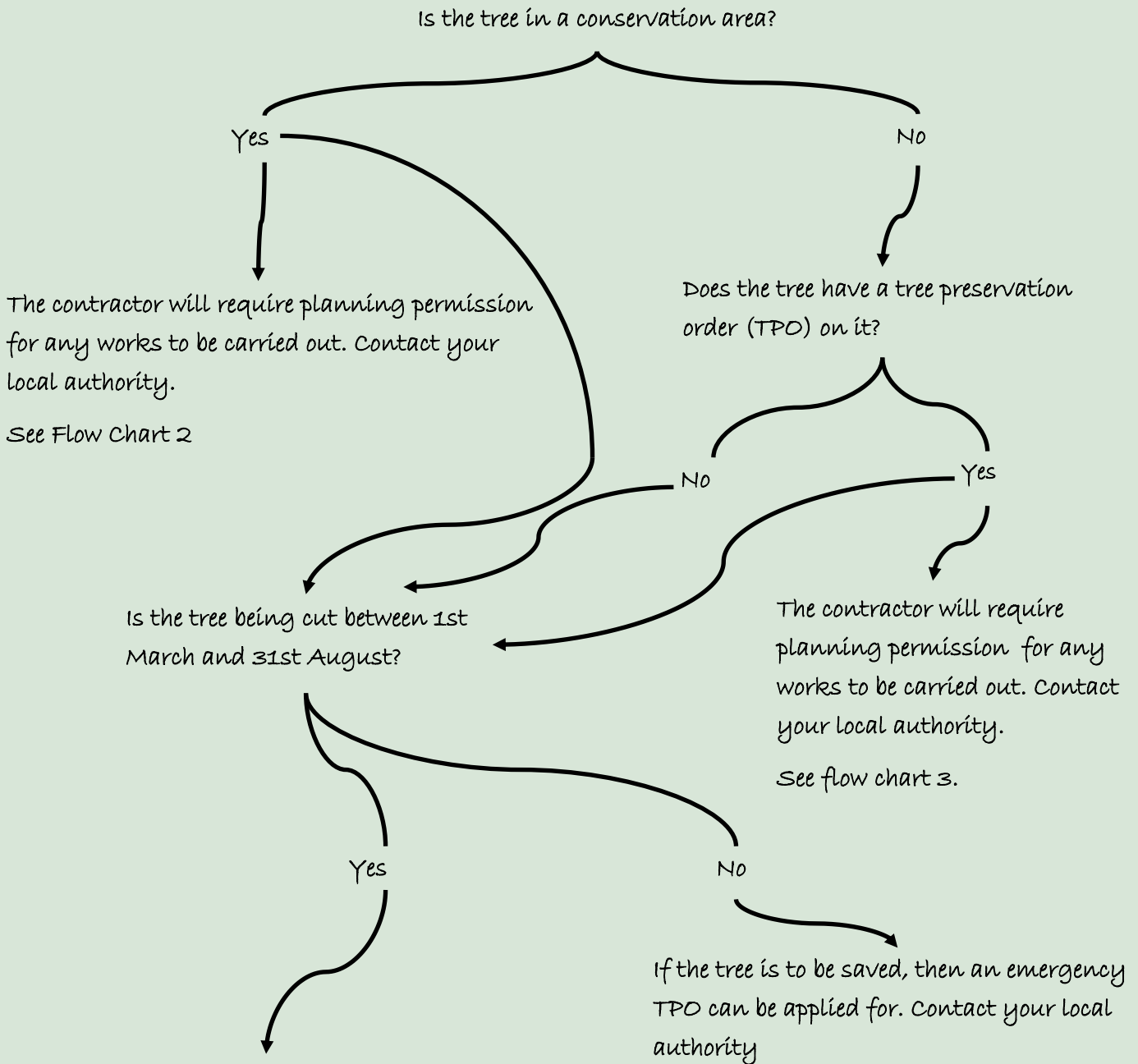




Flow chart 1.

Guide to Tree works and the law

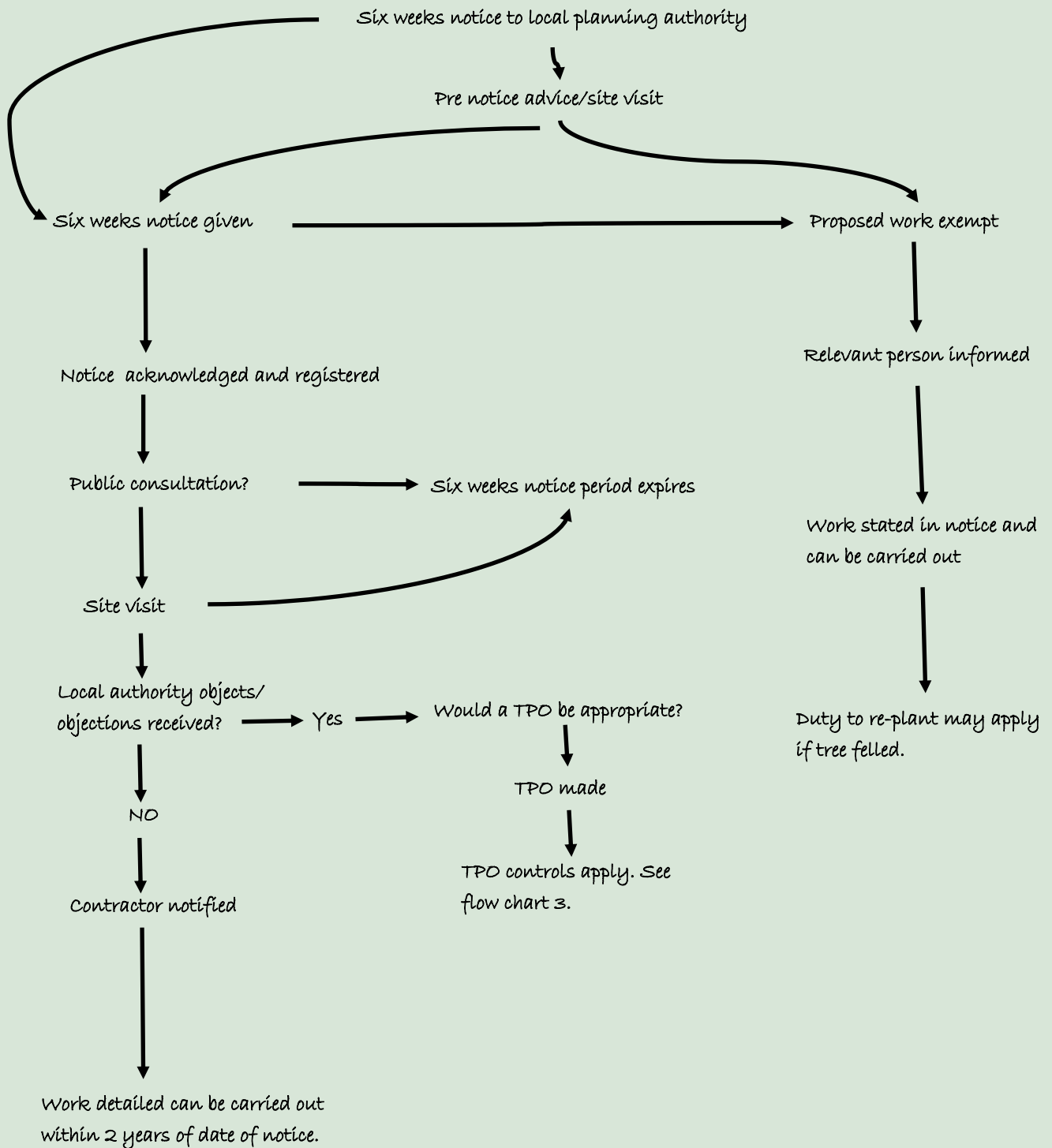


The tree should have had either a bird nesting survey done by a suitably licenced ecologist or been checked for nesting birds by a competent person. If there is evidence of nesting or evidence of birds/chicks, killed or injured and nests destroyed, take photographic/video evidence, contact the local police on 101 and report a wildlife crime and contact your local authority.



Flow chart 2

Trees in a conservation area





Flow chart 3

Application to carry out works on trees protected by a TPO

